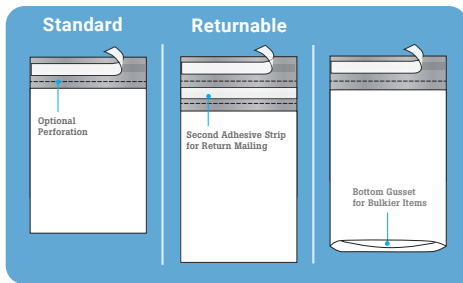




Poly Mailers with 50% Recycled Content have this message printed on them.

Made with 30% post-consumer and 20% post-industrial material

POLY MAILERS



THE BASICS

Our Poly Mailers are designed for the secure shipment of items and are highly popular with online retailers. A tamper-proof and water resistant construction prevents any damage that occur during shipment.

PRODUCT FEATURES

- ▶ A white exterior and silver interior provide complete opacity from prying eyes.
- ▶ Tear-resistant and durable.
- ▶ Tamper-evident, with a permanent self-seal adhesive strip for easy closure.
- ▶ Choice of Standard (non-perforated), Perforated, Returnable, and Expansion (bottom gusseted).
- ▶ Returnable Poly Mailers have a second adhesive strip to allow for easy merchandise returns or a second shipment.
- ▶ Expansion Poly Mailers have a bottom gusset to accommodate bulky items.

TECHNICAL DETAILS

Made from a coextruded blend of Low and Linear Low-Density Polyethylene. All mailers provide featuring a tamper proof permanent adhesive closure and side weld construction.

POLY MAILERS

ITEM	W x L	LIP	CNT	WT
NON-PERFORATED				
5150	6 X 9	1.5"	1000	12
5155	7.5 X 10.5	1.5"	1000	17
5160	9 X 12	1.5"	1000	22
5165	10 X 13	1.5"	1000	26
5170	12 X 15.5	1.5"	500	19
5175	14 X 17	1.5"	500	23
5180	14.5 X 19	1.5"	500	27
5185	19 X 24	2"	200	18
5190	24 X 24	2"	200	22

PERFORATED

5100	6 X 9	1.5"	1000	12
5102	7.5 X 10.5	1.5"	1000	17
5104	9 X 12	1.5"	1000	22
5107	10 X 13	1.5"	1000	26
5110	12 X 15.5	1.5"	500	19
5112	14 X 17	1.5"	500	23
5115	14.5 X 19	1.5"	500	27
5117	19 X 24	2"	200	18
5120	24 X 24	2"	200	22

EXPANSION, NON-PERFORATED

5212	10 X 13 - 2" BG	1.5"	1000	22
5214	11 X 13 - 4" BG	1.5"	500	13
5216	13 X 16 - 4" BG	1.5"	500	19
5218	15 X 20 - 4" BG	1.5"	300	16
5220	20 X 24 - 4" BG	2"	200	17
5222	26 X 28 - 5" BG	2"	100	13

BUILD ANY SIZE:

Mil: 2-5 Width: 4"-36" Length: 4"-36" Lip: 1"-4"

MORE OPTIONS:

Printing, Venting, Packaging Details

RETURNABLE POLY MAILERS

ITEM	W x L	LIP	CNT	WT
5200	12 X 15.5	3"	500	19
5205	14 X 17	3"	500	23
5210	19 X 24	3"	200	17

BUILD ANY SIZE:

Mil: 2.5-4 Width: 4"-36" Length: 4"-36" Lip: 2.5"-4"

MORE OPTIONS:

Printing, Venting, Packaging Details

POLY MAILERS 50% RECYCLED CONTENT

Our Poly Mailers with 50% Recycled Content are designed with a portion of Post-Consumer Recycled (PCR) material, such as bottles from curbside bins, and Post-Industrial Recycled (PIR) material to keep waste out of landfills.

TECHNICAL DETAILS

Made from a coextruded blend of Low-Density Polyethylene with 50% Recycled Content (30% PCR and 20% PIR). These feature a tamper proof permanent adhesive closure and side weld construction.

ITEM	W x L	LIP	CNT	WT
NON-PERFORATED				
19135	10 X 13	1.5"	1000	24
19145	12 X 15.5	1.5"	500	17
19155	14.5 X 19	1.5"	500	25
19165	19 X 24	1.5"	200	17
PERFORATED				
19130	10 X 13	1.5"	1000	24
19140	12 X 15.5	1.5"	500	17
19150	14.5 X 19	1.5"	500	25
19160	19 X 24	1.5"	200	17

MORE OPTIONS:

3 Additional Sizes, Printing

POLY BUBBLE MAILERS

Our Poly Bubble Mailers are shockproof and ideal for shipping smaller fragile or delicate items.



TECHNICAL DETAILS

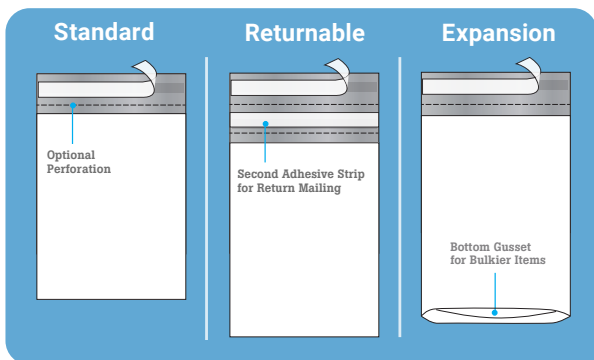
Made from a coextruded blend of Low-Density Polyethylene lined with 1/8" bubble. A white exterior and silver interior provides complete opacity. All bags feature a 1.5" lip with a permanent adhesive and a side weld construction. Packaged flat in cases. Measured in outside dimensions (O.D.), including the lip.

ITEM	W x L	SIZE	CNT	WT
19170	4 X 8	#000	500	8
19173	5 X 10	#00	250	7
19175	6.5 X 10	#0	250	8
19180	7.25 X 12	#1	100	4
19183	8.5 X 12	#2	100	5
19185	8.5 X 14.5	#3	100	6
19190	9.5 X 14.5	#4	100	6
19193	10.5 X 16	#5	100	8
19195	12.5 X 19	#6	50	6
19197	14.25 X 20	#7	50	7

CONTACT US FOR
MORE INFORMATION



CUSTOM POLY MAILERS



Our Custom Poly Mailers provide a private and secure way to ship items. White on the outside and silver on the inside, these offer complete opacity to keep contents hidden from prying eyes. Choose from a variety of constructions, printed or unprinted:

Perforated or Non-perforated

Select to add a tear strip below the adhesive for easy opening, or choose non-perforated for a tamper-proof construction.

Expandable

These feature a bottom gusset for mailer expansion to accommodate bulkier items.

Returnable

These feature two adhesive strips and two perforations. The top strip folds and seals for initial shipment, and can be opened with the first perforation. The second strip can be folded over and sealed for return shipment.

Printing

Custom design your poly mailer with up to six colors on both sides, spot and process printing. Create a branded image or a full-color, full-bleed mailer.

TECHNICAL DETAILS

Made from a coextruded blend of Low and Linear Low-Density Polyethylene. All mailers feature a tamper proof permanent adhesive closure and side weld construction.



Each construction is available in a range of sizes and gauges. All mailers are water-resistant and feature a tamper-proof permanent adhesive closure and side weld construction. Packaged in cases.

CUSTOM OPTIONS

- ▶ **Mil: 2-5 Width: 4"-36" Length: 4"-36" Lip: 1"-4"**
- ▶ **Returnable Poly Mailers:**
Mil: 2.5-4 Width: 4"-36" Length: 4"-36" Lip: 2.5"-4"

CUSTOM OPTIONS WITH 50% RECYCLED CONTENT

Our Poly Mailers with 50% Recycled Content are designed with a portion of Post-Consumer Recycled (PCR) material and Post-Industrial Recycled (PIR) material to keep waste out of landfills. Available in 7 of the most popular sizes, perforated or non-perforated. These can be printed up to 3 colors on 2 sides. *Note: Full bleed printing is not available.*

TECHNICAL DETAILS

Made from a coextruded blend of Low-Density Polyethylene with 50% Recycled Content (30% PCR and 20% PIR). These feature a tamper proof permanent adhesive closure and side weld construction.

CUSTOM OPTIONS

- ▶ Available in 7 sizes, perforated or non-perforated:
7.5" x 10.5"
9" x 12"
10" x 13"
12" x 15.5"
14.5" x 19"
19" x 24"
24" x 24"
- ▶ Custom printing is available up to 3 colors on 2 sides. *Note: Full bleed printing is not available.*

This message comes positioned on your bag, but can be changed for your own messaging.



Made with 30% post-consumer and 20% post-industrial material

CONTACT US FOR MORE INFORMATION



Source Mountain Supply, LLC.
920-382-0382
www.sourcemountain.com
Sales@sourcemountain.com

"Your Sourcing Specialists"